

Where every member of our extended family realises their God-given potential, inspired by John 10:10. Jesus said, "I have come so you may have life in all its fullness."



All Saints'
Academy
Cheltenham



How you can support your child to be successful at All Saints' Academy

A Guide for Parents and Carers

Year 9



Tel: 01242 711200

Email: admin@asachelt.org



All Saints'
Academy
Cheltenham

A message from our Principal



All Saints' has been recognised as a place of high achievement and progress where all children are included.

Our vision is that our students achieve their God-given potential. I take that challenge seriously because of the tremendous potential in each of our new students.

In the years to come your children will learn volumes, achieve great exam outcomes, perform in shows, compete (and hopefully win) across many sports, lead other students, serve in the community and eventually develop into adults that will have a huge impact in every area of their lives.

Our success will be measured in the impact that your children have in the years beyond their time at All Saints', living as Jesus said, "Life in all of its fullness". I look forward to working alongside you to ensure the best outcomes for your children.

We look forward to welcoming you to the Academy in the coming months as we prepare for the start of the new year.

Mr Benjamin Williams, Principal



All Saints'
Academy
Cheltenham

Our Vision and Values

Where every member of our extended family realises their God-given potential,
inspired
by John 10:10. Jesus said, "I have come so you may have life in all its fullness."

All Saints' Academy actively promotes Christian values in all our activities. We concentrate on the values of Respect, Love, Service, Reconciliation, Justice and Peace, which we want to see grow and develop in the lives of all our students. We start the Academy day every morning by saying our Academy prayer together in tutor groups during Meet, Greet and Pray.

Dear Lord,
Teach us how to **respect** others,
And to **love** and **serve** one
another in all that we do and say.
And when we get it wrong, give
us the strength to get it right and
be **reconciled**.
Lead us to **justice** through your
words of wisdom and guide us
to everlasting **peace**.

Amen





What our students say about us:

“I’ve made a load of new friends and got to know the people I already knew a lot better.”

Ruby, Year 7 student

“Teachers make us feel welcome, safe, and protected. They make lessons fun and adapt them so we can all learn.”

Katie, Year 7 student

“All Saints’ Academy has provided me and my peers the chance to experience a real working environment and the commitment to giving students the best opportunities to succeed and exceed their potential is at the heart of All Saints’ Academy and its ethos.”

Shannon, Year 13 student

Year 7 Retreat
Day





All Saints'
Academy
Cheltenham

Welcome from the Progress Leader

Welcome to our new Year 9 students. I am proud to be continuing with you on your journey throughout the Academy. It has been brilliant to watch the progress and achievements made in many aspects of Academy Life during your time here so far.

I am hugely proud of the achievements of the year group and the steps made to maximise learning throughout year 8. We now need to continue to build upon these successes and tenacity as we embark on finishing Key Stage 3 strongly. Students in Year 9 will be expected to engage in more extra-curricular activities this Academic Year and develop more of an understanding about future aspirations and careers.

The new academic year will present exciting challenges for our students to embrace and face head-on in their journey to success, such as taking part in the Duke of Edinburgh Award and making their GCSE option choices. Students will be expected to develop more independence and accountability in their subjects. This can be an overwhelming experience, but students will be supported every step of the way.

All Saints' Academy is a thriving community that will always seek for the best outcomes for our students, and we know that our new Year 9 cohort will continue to strive to achieve their God-given potential. I look forward to continuing your Academy journey with you. Here's to an exciting and successful year ahead.



Mrs N Mitchell

Year 9 Progress Leader

NMitchell@ASACHelt.org



Working together to improve attendance

School attendance is a key priority for us all here at All Saints' Academy. Creating good habits that support attendance is the responsibility of everyone involved with the Academy – our students themselves, parents, carers, Academy staff and trustees, the Local Authority and other partners.

For your child to achieve their full potential it is absolutely vital that they are in school every day unless a reason acceptable to the Academy is given and we are able to authorise the absence.

To help us all to focus on this we ask parents and carers to:

- Notify us of your child's absence before 8:15am on the first day and each following day that they are absent from school by calling the student absence line on 01242 711200.
- Ensure that your child arrives at the Academy by 8:30am every day.
- Contact the Academy at an early stage about any concerns you have about your child's attendance.
- Work with the Academy in resolving any issues that may be having an impact on your child's attendance.
- Try to keep health appointments out of school hours where possible. Where this is not possible, your child should only be out of school for the minimum amount of time necessary for the appointment.
- Recognise that the Academy will be concerned when any child misses time in school and work with us to avoid this.

Parents and carers can expect that the Academy will:

- Monitor all students' attendance and punctuality closely.
- Visit your home if your child is absent and unaccounted for or if there are concerns about your child's welfare or attendance.
- Contact you each day your child is absent by telephone call, text, email and/or home visit.
- Fulfil our safeguarding duty where a child is missing from school and is unaccounted for or there are concerns for their welfare – this may involve referrals to other agencies such as the local authority Education Inclusion Support Service, Children's Services and/or the police.
- Reward good and improved attendance.
- Meet regularly with parents and carers of students whose attendance is a concern.
- Work with the Local Authority to pursue legal prosecution for non-attendance where relevant criteria has been met.

The relationship between attendance and achievement is inextricably linked and encouraging excellent attendance is one of the most powerful ways you can prepare your child for success both in school and in life. When you make full attendance a priority, you help your child get a thorough education, better grades, develop healthy life habits, and have a better chance of achieving their full potential.

Students who attend school regularly also feel more connected to their community, develop important social skills and friendships, and are significantly more likely to leave school with good qualifications, setting them up for a strong future.

You can view your child's current attendance record on the EduLink App to help reward and encourage good attendance from the home.

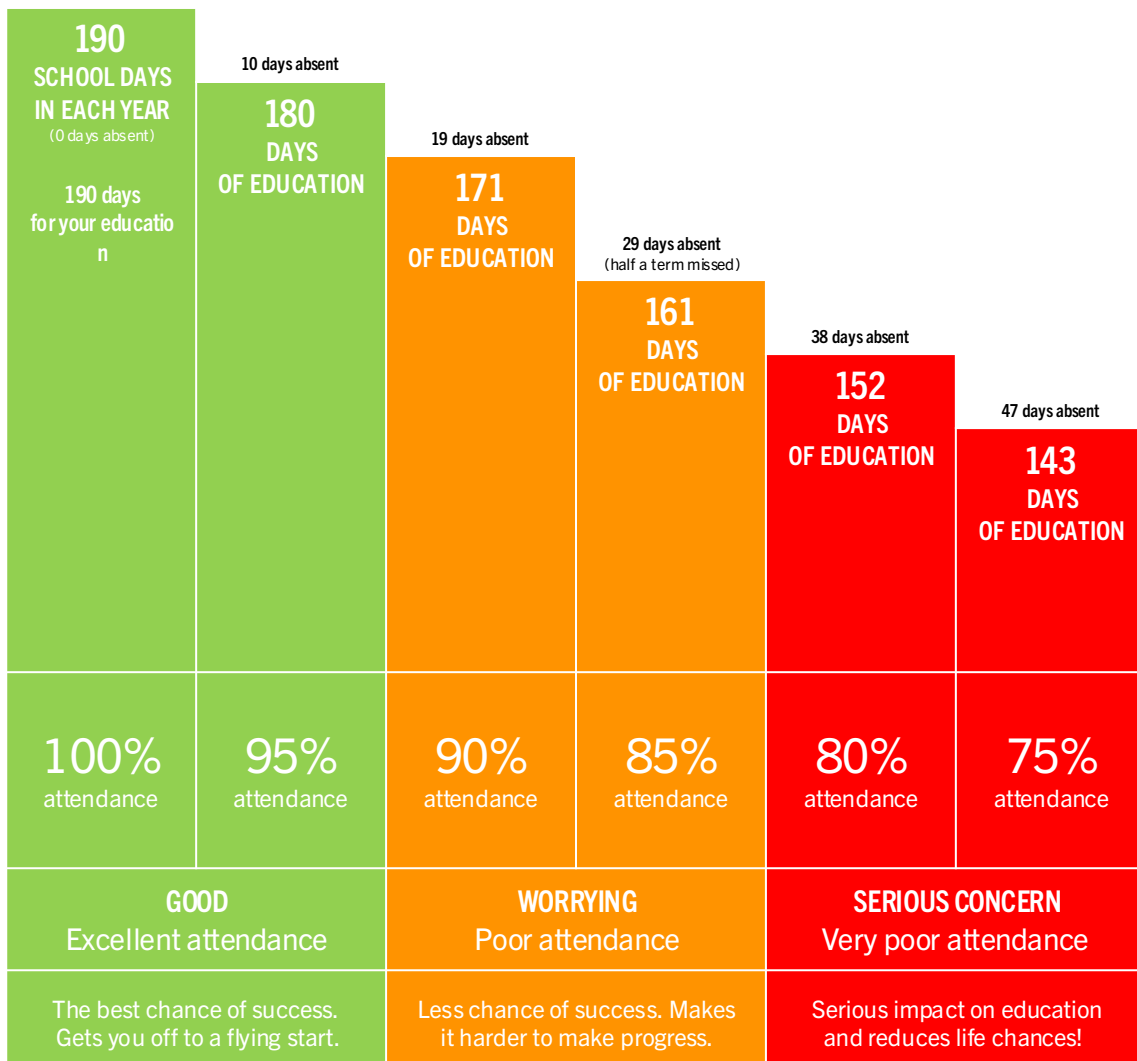


EVERY SCHOOL DAY COUNTS

Don't miss out on the education you deserve!

There are 175 non-school days during the year to spend on family time, visits, shopping, holidays, household jobs and other appointments.

Days off school add up to lost learning.





Safeguarding and Pastoral Team

At All Saints' Academy, we promote positive mental health, wellbeing and safeguarding for our whole Academy community (students, staff, parents, carers). We recognise how important mental health and emotional wellbeing is to our lives in the same way as physical health and we believe that students' mental health is a crucial factor in their overall wellbeing, affecting their learning and achievement.

All young people go through ups and downs during their school career, and some face significant life events. We take a whole Academy approach to promoting positive mental health which aims to help students become more resilient, happy and successful by preventing problems before they arise and offering support where it is needed. Safeguarding is a crucial part of our LIFE programme, and we consider what is in the best interest of the young person at all times.

We have a well-qualified dedicated pastoral team to support our families and students through secondary education at All Saints' Academy.

All Saints' Academy has a chaplaincy team appointed by the Anglican and Catholic Dioceses. As well as arranging opportunities for prayer, worship and a range of spiritual events, the Chaplaincy team are available to all students in a caring and supportive way. We are here to help if you have any concerns or worries.

The Academy's Safeguarding Team can be reached via safeguarding@asachelt.org



Mr Williams



Mr Wilkinson



Mr Sampson



Mr Bradley



Mrs Herrick



Mr Round



Miss Walton



Mr Newstead



Mrs Wood



Our Uniform



At All Saints' Academy our uniform has been carefully chosen to ensure a sense of pride, not only in personal appearance but also in the Academy itself.

A list of uniform is provided below, along with a price indication. Our stockist will be able to provide a full price list.

- A plain black blazer with the Academy logo on the breast pocket
- A black jumper with the Academy logo
- A black skirt (at least 22" long) and black trousers featuring the All Saints' Academy logo
- A black tie with the Academy logo
- A white collared shirt with top button
- Black lace up or slip-on shoes, black socks

| | |
|----------|-------------|
| Blazers | From £32.00 |
| Jumpers | From £18.95 |
| Trousers | From £19.50 |
| Skirts | From £15.95 |
| Ties | From £8.25 |



You can contact our stockist here:

Monkhouse, 252 High Street, Cheltenham, GL50 3HF

<https://www.monkhouse.com/school/school-all-saints-academy-cheltenham-um-ey469335>



Our Uniform

OUR PE KIT

A list of PE Kit is provided below along with a price indication. Once again, our stockists will be able to provide a full price list. Long hair must be tied back, and watches and earrings must be removed.

- A unisex PE polo shirt
- A plain black pair of jogging bottoms or leggings
- A plain black pair of shorts or skort
- Black or red sports socks
- A pair of trainers that will support and cushion your child's feet and joints through practical activities

| | |
|----------------------|-------------|
| Unisex PE Polo Shirt | From £32.00 |
| Rugby Shirt | From £18.95 |
| Black Games Shorts | From £19.50 |
| Black Skort | From £15.95 |



HAIR, MAKE-UP AND JEWELLERY

Hair

- Extreme haircuts are not permitted
- Bright coloured dyes are not permitted
- Long hair will need to be tied back for practical activities
- Minimum length: Grade 2
- Simple, dark hair accessories

Jewellery

- A watch
- Stud earrings (a maximum of one in each ear lobe)
- No other jewellery is permitted
- Make-up is not permitted



Equipment and Mobile Phones

The basic equipment every student is expected to have each day:

- A school bag big enough to carry equipment, books and PE kit

In a clear pencil case:

- Pens
- Pencils
- Ruler
- Eraser
- Pencil sharpener
- A reading book
- Calculator



Personal belongings

Valuable items should not be brought into the Academy with you. The Academy cannot be held responsible if they get lost or stolen.

Mobile Phones

Mobile phones and smart watches are a distraction to learning and a negative influence upon mental health and well-being. Due to this, we feel strongly as an Academy community that the use of electronic devices and mobile phones (other than Academy devices to support learning) should be locked away during the school day. Research tells us that schools that have prohibited the use of mobile phones are seeing a significant rise in outcomes, improved mental health and social interaction skills. This for us, gives a strong rationale for prohibiting their use.

- Students are not allowed to use mobile phones throughout the Academy day and if they are seen they will be confiscated until the end of the day.
- An after school detention will be issued.
- Mobile phones are switched off at 8:30 am and given to your child's form tutor during MGP. These will be locked in a secure lock box. They are returned to your child during afternoon registration.
- If you need to contact your child during the day, please telephone Reception and we will ensure a message gets to them.
- If a phone gets confiscated twice, parents will be asked to collect it.





Ready To Learn and Behaviour

- If a student arrives late to the Academy, their parents will receive an email or text message. They will complete a break or lunch detention.
- If a student is given a detention for unacceptable behaviour in a lesson, or elsewhere, their parents and form tutor will receive an email.
- Students will not be allowed to leave a lesson to fill a drinks bottle. They should do this during break times.
- Staff will be closely monitoring students who repeatedly ask to leave lessons to go to the toilet. There will be close monitoring of lost learning time for students who are not in lessons learning.

Sanctions Framework – some examples

| | |
|---|---|
| <p>10 min break time (10:00 and 11:00 am) Reset Room</p> | <ul style="list-style-type: none"> * Late to the Academy (parents receive an Edulink message) * Late to lesson periods 1 or 2 * Learning Duty periods 1 or 2 (remaining 30 min served after school) |
| <p>10 min lunch time (12:20 and 13:20 am) Reset Room</p> | <ul style="list-style-type: none"> * Late to the Academy (parents receive an Edulink message) * Late to lesson periods 2 – 4 * Learning Duty periods 2 - 4 (remaining 30 min served after school) * Repeatedly out of bounds |
| <p>60 min after school detention Every day from 3:15 pm CG01 *30 min if break/lunch LD detention served AND if silent reading</p> | <ul style="list-style-type: none"> * Learning Duty x1/day (parents receive an Edulink message) * Failure to attend late detention * Unpermitted use of mobile phone/ earphones will result in confiscation and a detention * Rudeness/defiance to staff |



Reading at the Academy

Reading is an essential skill that we are prioritising for all years at the Academy with Years 7-11 starting daily with designated time for reading.

Years 7-8

Students in these years will have 2 sessions reading a class book. One will be tutor-led and one that encourages students to read aloud and hone their reading skills. The third session will be extra time for students to read their Accelerated Reader book. The week's final session will allow students to read for pleasure, bringing in a book, newspaper or magazine of their choice.

Students who are reading below age-related expectations will be given targeted reading interventions during the reading sessions to help close the gap.

Years 9-10

Students in these years will have 2 sessions reading a class book. One will be tutor-led and one that encourages students to read aloud and hone their reading skills. The third session will be extra time for them to read a book in small groups or independently. The final session of the week will give students the opportunity to read for pleasure, bringing in a book, newspaper or magazine of their choice.

Year 11

Year 11 will be reading to revise and guided through revision reading by their tutors focusing on a different subject each week. This will not only help improve reading skills, but allow students to consolidate key knowledge too.



Supporting your Child's Reading

Positivity

The most useful way for you to support your child with their reading, whatever stage they are at, is by being positive about reading. This could be by modeling reading by showing them you reading yourself or reading something, such as a news article, together as a family. Giving books as presents or rewards is another way of reinforcing a positive message about reading.

Encourage Reading

Daily reading can have many benefits for children and adults alike so by encouraging your child to read for 10-20 daily you are not only helping them to improve their reading skills but also to learn new vocabulary and increase their empathy and imaginative skills. Little and often is a good approach to take when reading so starting by encouraging your child, whatever their age, to read a couple of nights a week before bed could have a real impact.

Join the library

At All Saints' Academy we have a good library with a range of different books at all reading levels but joining the local library will give your child even more choice when it comes to selecting books to read. Libraries are free to join and have a wide selection of non-fiction, graphic novels, and new releases so there is something for everyone to enjoy. Libraries will often run events linked to reading which your child might be interested in taking part in or offer quiet study spaces that older children might like to use to revise.

Audiobooks and subtitles

Audiobooks are an effective way for children to get engaged with reading and the power of stories. Listening to audiobooks with your children is a less threatening way for some children to engage with reading and are a really useful revision tool for older students. Having copies of the text to follow along with whilst listening helps with comprehension and vocabulary. Whilst watching TV, you can also encourage reading by having the subtitles on; maybe try watching a film in a different language as a family using the subtitles as a novelty.



Term dates



SCHOOL TERMS AND HOLIDAYS 2024/2025

| SEPTEMBER | | | | | OCTOBER | | | | | NOVEMBER | | | | | | |
|-----------|---|----|----|----|---------|------|----|----|----|----------|------|---|----|----|----|----|
| Mon | 2 | 9 | 16 | 23 | 30 | Mon | 7 | 14 | 21 | 28 | Mon | 4 | 11 | 18 | 25 | |
| Tues | 3 | 10 | 17 | 24 | Tues | 1 | 8 | 15 | 22 | 29 | Tues | 5 | 12 | 19 | 26 | |
| Wed | 4 | 11 | 18 | 25 | Wed | 2 | 9 | 16 | 23 | 30 | Wed | 6 | 13 | 20 | 27 | |
| Thur | 5 | 12 | 19 | 26 | Thur | 3 | 10 | 17 | 24 | 31 | Thur | 7 | 14 | 21 | 28 | |
| Fri | 6 | 13 | 20 | 27 | Fri | 4 | 11 | 18 | 25 | Fri | 1 | 8 | 15 | 22 | 29 | |
| Sat | 7 | 14 | 21 | 28 | Sat | 5 | 12 | 19 | 26 | Sat | 2 | 9 | 16 | 23 | 30 | |
| Sun | 1 | 8 | 15 | 22 | 29 | Sun | 6 | 13 | 20 | 27 | Sun | 3 | 10 | 17 | 24 | |
| DECEMBER | | | | | JANUARY | | | | | FEBRUARY | | | | | | |
| Mon | 2 | 9 | 16 | 23 | 30 | Mon | 6 | 13 | 20 | 27 | Mon | 3 | 10 | 17 | 24 | |
| Tues | 3 | 10 | 17 | 24 | 31 | Tues | 7 | 14 | 21 | 28 | Tues | 4 | 11 | 18 | 25 | |
| Wed | 4 | 11 | 18 | 25 | Wed | 1 | 8 | 15 | 22 | 29 | Wed | 5 | 12 | 19 | 26 | |
| Thur | 5 | 12 | 19 | 26 | Thur | 2 | 9 | 16 | 23 | 30 | Thur | 6 | 13 | 20 | 27 | |
| Fri | 6 | 13 | 20 | 27 | Fri | 3 | 10 | 17 | 24 | 31 | Fri | 7 | 14 | 21 | 28 | |
| Sat | 7 | 14 | 21 | 28 | Sat | 4 | 11 | 18 | 25 | Sat | 1 | 8 | 15 | 22 | | |
| Sun | 1 | 8 | 15 | 22 | 29 | Sun | 5 | 12 | 19 | 26 | Sun | 2 | 9 | 16 | 23 | |
| MARCH | | | | | APRIL | | | | | MAY | | | | | | |
| Mon | 3 | 10 | 17 | 24 | 31 | Mon | 7 | 14 | 21 | 28 | Mon | 5 | 12 | 19 | 26 | |
| Tues | 4 | 11 | 18 | 25 | Tues | 1 | 8 | 15 | 22 | 29 | Tues | 6 | 13 | 20 | 27 | |
| Wed | 5 | 12 | 19 | 26 | Wed | 2 | 9 | 16 | 23 | 30 | Wed | 7 | 14 | 21 | 28 | |
| Thur | 6 | 13 | 20 | 27 | Thur | 3 | 10 | 17 | 24 | Thur | 1 | 8 | 15 | 22 | 29 | |
| Fri | 7 | 14 | 21 | 28 | Fri | 4 | 11 | 18 | 25 | Fri | 2 | 9 | 16 | 23 | 30 | |
| Sat | 1 | 8 | 15 | 22 | 29 | Sat | 5 | 12 | 19 | 26 | Sat | 3 | 10 | 17 | 24 | 31 |
| Sun | 2 | 9 | 16 | 23 | 30 | Sun | 6 | 13 | 20 | 27 | Sun | 4 | 11 | 18 | 25 | |
| JUNE | | | | | JULY | | | | | AUGUST | | | | | | |
| Mon | 2 | 9 | 16 | 23 | 30 | Mon | 7 | 14 | 21 | 28 | Mon | 4 | 11 | 18 | 25 | |
| Tues | 3 | 10 | 17 | 24 | Tues | 1 | 8 | 15 | 22 | 29 | Tues | 5 | 12 | 19 | 26 | |
| Wed | 4 | 11 | 18 | 25 | Wed | 2 | 9 | 16 | 23 | 30 | Wed | 6 | 13 | 20 | 27 | |
| Thur | 5 | 12 | 19 | 26 | Thur | 3 | 10 | 17 | 24 | 31 | Thur | 7 | 14 | 21 | 28 | |
| Fri | 6 | 13 | 20 | 27 | Fri | 4 | 11 | 18 | 25 | Fri | 1 | 8 | 15 | 22 | 29 | |
| Sat | 7 | 14 | 21 | 28 | Sat | 5 | 12 | 19 | 26 | Sat | 2 | 9 | 16 | 23 | 30 | |
| Sun | 1 | 8 | 15 | 22 | 29 | Sun | 6 | 13 | 20 | 27 | Sun | 3 | 10 | 17 | 24 | 31 |

| | | | | | |
|---------------------------------|--|--|--|--------------------------------------|--|
| Phase 1 - Year 7 only | | Phase 2 - Year 7, 11 and 12 only | | Phase 3 - Whole Academy return | |
| Term Time | | Holidays | | Bank Holidays | |
| CPD (Students do not attend) | | | | | |

| | |
|--------|--|
| Week 1 | |
| Week 2 | |



Key dates

| 2024-25 | w/c | Year 9 |
|-----------------|----------|---|
| Term 1 – Week 1 | 02.09.24 | First day – 6 th Sep |
| Term 1 – Week 2 | 09.09.24 | Parents' Information Evening – 11 th Sep |
| Term 1 – Week 3 | 16.09.24 | |
| Term 1 – Week 4 | 23.09.24 | Academy Open Evening (Year 6) |
| Term 1 – Week 5 | 30.09.24 | |
| Term 1 – Week 6 | 07.10.24 | |
| Term 1 – Week 7 | 14.10.24 | |
| Term 1 – Week 8 | 21.10.24 | Staff INSET – 25 th Oct |
| Half term | | |
| Term 2 – Week 1 | 04.11.24 | |
| Term 2 – Week 2 | 11.11.24 | |
| Term 2 – Week 3 | 18.11.24 | |
| Term 2 – Week 4 | 25.11.24 | |
| Term 2 – Week 5 | 02.12.24 | Cycle 1 Assessment week |
| Term 2 – Week 6 | 09.12.24 | Carol Service – 9 th Dec |
| Term 2 – Week 7 | 16.12.24 | Year 9 reward trip |
| Christmas | | |
| Term 3 – Week 1 | 06.01.25 | Staff INSET – 6 th Jan |
| Term 3 – Week 2 | 13.01.25 | |
| Term 3 – Week 3 | 20.01.25 | |
| Term 3 – Week 4 | 27.01.25 | Year 9 options guidance released |
| Term 3 – Week 5 | 03.02.25 | |
| Term 3 – Week 6 | 10.02.25 | |
| Half term | | |
| Term 4 – Week 1 | 24.02.25 | |
| Term 4 – Week 2 | 03.03.25 | |
| Term 4 – Week 3 | 10.03.25 | |
| Term 4 – Week 4 | 17.03.25 | Year 9 options and Parents' Evening – 18 th March |
| Term 4 – Week 5 | 24.03.25 | Cycle 2 Assessment week |
| Term 4 – Week 6 | 31.03.25 | Academy Production |
| Term 4 – Week 7 | 07.04.25 | |
| Easter | | |
| Term 5 – Week 1 | 28.04.25 | Year 9 options confirmed |
| Term 5 – Week 2 | 05.05.25 | Year 9 reward trip |
| Term 5 – Week 3 | 12.05.25 | |
| Term 5 – Week 4 | 19.05.25 | |
| Half term | | |
| Term 6 – Week 1 | 02.06.25 | |
| Term 6 – Week 2 | 09.06.25 | |
| Term 6 – Week 3 | 16.06.25 | |
| Term 6 – Week 4 | 23.06.25 | Cycle 3 Assessment fortnight |
| Term 6 – Week 5 | 30.06.25 | |
| Term 6 – Week 6 | 07.07.25 | Bishop's Award – 7 th July Sports Day – 11 th July |
| Term 6 – Week 7 | 14.07.25 | |



Our Academy Day

Students follow a two-week timetable. There are 5 lessons each day, each lasting an hour. Students should arrive at the Academy for 8:30am and the Academy day finishes at 3:15 pm, at which time enrichment lessons begin.

Years 7, 10 and Sixth Form will be on first break/lunch.
Years 8, 9 and 11 will be on second break/lunch.

| | | | |
|-------------------|-------|-------------------|-------|
| Arrive | 8.30 | Arrive | 8.30 |
| Roll Call/MGP | 8.30 | Roll Call/MGP | 8.30 |
| Reading | 8.35 | Reading | 8.35 |
| Lesson 1 | 9.00 | Lesson 1 | 9.00 |
| Break | 10.00 | Lesson 2 | 10.00 |
| Lesson 2 | 10.20 | Break | 11.00 |
| Lesson 3 | 11.20 | Lesson 3 | 11.20 |
| Lunch | 12.20 | Lesson 4 | 12.20 |
| Lesson 4 | 12.50 | Lunch | 13.20 |
| Lesson 5 | 13.50 | Lesson 5 | 13.50 |
| Tutor time/CAOW | 14.50 | Tutor time/CAOW | 14.50 |
| Depart/Enrichment | 15.15 | Depart/Enrichment | 15.15 |





Homework Timetable (Example)

| Week 1 | | | | | | | | |
|-----------|----------|----------|----------|-----------|-----------|-----------|-----------|-----------|
| Subject | 7C | 7D | 7G | 7S | 7T | 7W | 7Y | |
| English | Friday | Friday | Thursday | Friday | Friday | Monday | Friday | |
| Maths | Tuesday | Tuesday | Tuesday | Tuesday | Tuesday | Tuesday | Tuesday | |
| Science | Monday | Monday | Monday | Thursday | Monday | Wednesday | Monday | |
| RE | Friday | Friday | Friday | Monday | Monday | Wednesday | Thursday | |
| Geography | Friday | Monday | Monday | Wednesday | Friday | Tuesday | Monday | |
| History | Thursday | Monday | Monday | Friday | Wednesday | Tuesday | Tuesday | |
| Art | | Monday | | Monday | | Monday | | |
| MFL | Thursday | Thursday | Thursday | Thursday | Thursday | Thursday | Thursday | |
| PA | | | Friday | | Tuesday | Wednesday | | |
| Computing | Thursday | | Thursday | Wednesday | | Thursday | | |
| | | | | | | | | |
| | 7sy/DT1 | 7sy/DT2 | 7sy/DT3 | 7sy/DT4 | 7cg/DT1 | 7cg/DT2 | 7cg/DT3 | 7cg/DT4 |
| DT | | Thursday | Tuesday | Monday | | Wednesday | Wednesday | |
| FOOD | Thursday | | Monday | Tuesday | Wednesday | | | Wednesday |

| Week 2 | | | | | | | | |
|-----------|-----------|-----------|-----------|-----------|-----------|-----------|-----------|----------|
| Subject | 7C | 7D | 7G | 7S | 7T | 7W | 7Y | |
| English | Friday | Friday | Thursday | Friday | Friday | Monday | Friday | |
| Maths | Tuesday | Tuesday | Tuesday | Tuesday | Tuesday | Tuesday | Tuesday | |
| Science | Monday | Monday | Monday | Thursday | Monday | Wednesday | Monday | |
| RE | Wednesday | Friday | Friday | Monday | N/A | Wednesday | Thursday | |
| Geography | Friday | Monday | Wednesday | Wednesday | Thursday | Tuesday | Tuesday | |
| History | Wednesday | Tuesday | Tuesday | Wednesday | Wednesday | Wednesday | Wednesday | |
| Art | Friday | | Friday | | Wednesday | | Thursday | |
| MFL | Friday | Friday | Friday | Thursday | Thursday | Thursday | Thursday | |
| PA | Tuesday | Wednesday | | Thursday | | | Wednesday | |
| Computing | | Thursday | | | Thursday | | Friday | |
| | | | | | | | | |
| | 7sy/DT1 | 7sy/DT2 | 7sy/DT3 | 7sy/DT4 | 7cg/DT1 | 7cg/DT2 | 7cg/DT3 | 7cg/DT4 |
| DT | Friday | | | | Thursday | | | Thursday |
| FOOD | | Friday | | | | Thursday | Thursday | |



Timetables

Read across the timetable to see what lessons take place on a particular day. The timetable shows the subject, the room where the lesson takes place and the name of the teacher.

Understanding room numbers

The first letter tells you which wing the classroom is in.

B = Bredon, M = Malvern, C = Cleeve

The next letter/number tells you the floor. G = Ground, 1 = first, 2 = second

The final two numbers tell you which classroom, from 01 to 07.

| | 1 | 2 | 3 | 4 | 5 |
|-------------|--|--|---|--|---|
| 1Mon | Art and Design M203 Miss Z R-M Ward | Mathematics B106 Mr A P Parkinson | English BG07 Mrs S Battershill | Science C203 Mrs E Mansfield | Modern Foreign M105 Ms C Terroba Baiza |
| 1Tue | Physical Educati B106 Mr E S Rollason | Mathematics B106 Mr A P Parkinson | Performing Arts H201 Miss R Harbour | English BG06 Mr J Mortimer | Science C203 Mrs E Mansfield |
| 1Wed | Computing BG01 Mr A Samra | Geography MG07 Mr J Bell | Mathematics B106 Mr A P Parkinson | English BG06 Mr J Mortimer | Performing Arts DR Miss H D Baynham |
| 1Thu | English BG06 Mr J Mortimer | Mathematics B106 Mr A P Parkinson | Science C203 Mrs E Mansfield | Physical Educati B106 Mr E S Rollason | History MG03 Ms R Mayes |
| 1Fri | Religion and Eth M103 Mrs S J Fox | Mathematics B106 Mr A P Parkinson | Modern Foreign M105 Ms C Terroba Baiza | English B204 Mrs T J Cummings | Science C203 Mrs E Mansfield |
| 2Mon | Computing BG01 Mr A Samra | Science C203 Mrs E Mansfield | History MG03 Ms R Mayes | English BG07 Mrs S Battershill | Mathematics B106 Mr A P Parkinson |
| 2Tue | Mathematics B106 Mr A P Parkinson | Physical Educati B106 Mr E S Rollason | Geography MG07 Mr J Bell | Science C203 Mrs E Mansfield | History MG03 Ms R Mayes |
| 2Wed | Religion and Eth M103 Mrs S J Fox | Design and Tech CG03 | English B201 Mrs T J Cummings | Computing BG01 Mr A Samra | Performing Arts DR Miss H D Baynham |
| 2Thu | Science C203 Mrs E Mansfield | Design and Tech CG04 Miss M Phillips | Religion and Eth M103 Mrs S J Fox | Geography MG07 Mr J Bell | Physical Educati B106 Mr E S Rollason |
| 2Fri | English BG06 Mr J Mortimer | Science C203 Mrs E Mansfield | Mathematics B106 Mr A P Parkinson | Art and Design M203 Miss Z R-M Ward | Modern Foreign M105 Ms C Terroba Baiza |



Restaurant

Loaves and Fishes is our Academy restaurant, located centrally within the Academy.

A range of hot and cold snacks are available to purchase at break time and lunchtime. At lunchtime, students can either choose the meal of the day or from a range of sandwiches, rolls, and other hot and cold snacks. A range of healthy drink options are available.

Alternatively, you may wish for your child to bring a packed lunch. Free School Meals

- Free school meals provision carries over from the primary school and you will not need to reapply
- A daily allowance be credited to your child's account
- Any left-over money is not carried over to the following day

If you need to apply for free school meals, please contact:

<http://www.gloucestershire.gov.uk/freeschoolmeals>

Lunch week 1

All our ingredients are locally sourced and delivered fresh by local suppliers. Our eggs are free-range and Red Lion stamped, our fish is sustainably sourced and MSC approved and our meat is British Red Tractor accredited wherever possible.

| | MONDAY | TUESDAY | WEDNESDAY | THURSDAY | FRIDAY |
|--|--|--|--|---|--|
| MAIN MEAL | HOMEMADE BEEF BURGER TOPPED WITH CHEESE | CHICKEN ENCHILADAS TOPPED WITH CHEESE AND SERVED WITH SOUR CREAM | SPAGHETTI BOLOGNAISE | CHICKEN CURRY SERVED WITH PILAU RICE | BREADED FISH FINGERS, CHIPS WITH PEAS & TARTAR SAUCE |
| ALL SERVED WITH SEASONAL VEGETABLES & POTATO OR RICE DISH OF THE DAY | | | | | |
| PLANT BASED / VEGETARIAN | ONION BHAJI SERVED WITH MINT AND YOGHURT SAUCE | VEGETARIAN QUORN CHILLI SERVED WITH SAVOURY RICE | BROCCOLI PASTA BAKE | SPINACH AND LENTIL CURRY SERVED WITH PILAU RICE | CHEESE & TOMATO QUICHE |
| ALL SERVED WITH SEASONAL VEGETABLES & POTATO OR RICE DISH OF THE DAY | | | | | |
| STREET FOOD FROM | KOREAN CHICKEN BAO BUNS WITH SOUTH ASIAN 'SLAW | VEGETABLE KHATI WRAP LOADED WITH SPICY VEGGIES AND RICE | CHICKEN GYRO PITTAS WITH PEPPERS, TZATZIKI | MEXICAN BEAN SALAD TORTILLA BOWN | LOADED HOT DOGS WITH CHOICE OF CHILLI, MUSTARD & ONIONS OR PULLED PORK TOPPING |
| TAKEAWAY TUBS FROM | MEATBALLS ITALINO PENNE ARRABIATA | SPICY CHICKEN WINGS ONION BHAJI WITH MINT SAUCE | CHICKEN ALFREDO SPAGHETTI POMODORO | CHILLI BEEF CON CARNE MAC 'N' CHEESE | BBQ CHICKEN WINGS PASTA BRAVAS |
| PIZZA SLICE FROM | MARGHERITA PEPPERONI | MOZZARELLA & PINEAPPLE HAWAIIAN | MARGHERITA SPICY CHICKEN | TOMATO, GREEN CHILLI, MOZZARELLA AMERICAN HOT | MARGHERITA BBQ CHICKEN |
| JACKETS | TRY OUR DELICIOUS FILLINGS FOR EACH | | | | |
| DESSERTS | HOT BANANA CAKE WITH CHOCOLATE SAUCE | DROP PANCAKES SERVED WITH CHERRY SAUCE & ICE CREAM | KEY LIME PIE | APPLE CRUMBLE & ICE CREAM | BAKEWELL TART |

Meal Deal
Main Meal
With Vegetables
And Dessert

£2.30

All Of Our Main Meals,
Sandwiches & Desserts Are
Freshly Made On Site Every Day



All Saints'
Academy
Cheltenham

Parent Portals



- Receive important communications from the Academy via SMS or Email.
- Make online payments in the Academy shop using your debit or credit card.
- View and top up your child or children's dinner money.
- See what your children have purchased from the canteen.
- Sign up for and give consent for trips, as well as track your payments and instalments.

<https://pmx.parentmail.co.uk/>

App Download:



Contact Details:

Email: payments@asachelt.org

Tel: 01242 711 347

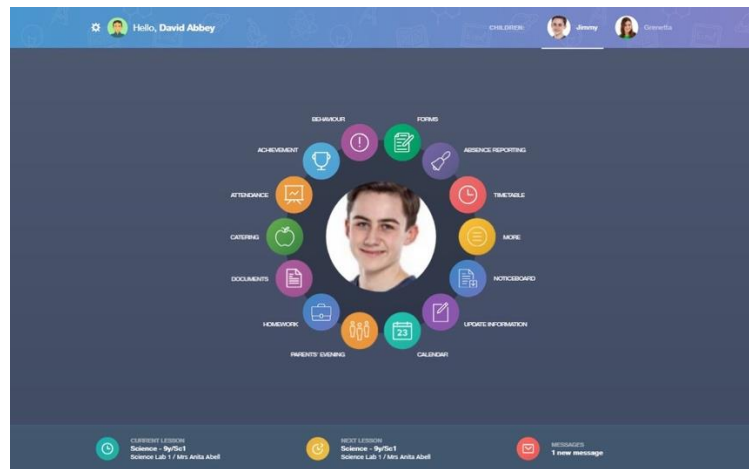


All Saints'
Academy
Cheltenham

Parent Portals



- Student records
- Updating details
- Student's timetable
- Signing up for parent evenings
- Enrichment sign-up



<https://www.edulinkone.com>

/

App Download:



Contact Details:

Email: admin@asachelt.org

Tel: 01242 711 200



All Saints'
Academy
Cheltenham

Parent Portals



- Monitor how much homework is being set
- Take part in home learning
- Check staff feedback

<https://www.satchelone.com/>

App Download:



Contact Details:

Email: admin@asachelt.org

Tel: 01242 711 200



All Saints'
Academy
Cheltenham

Enrichment

At All Saints' Academy we offer a variety of enrichment programmes to ensure our students have the opportunity to have life in all its fullness.

Here are few examples of some of the activities on offer:

- Homework Club
- Subject Revision
- Sports Practice
- Drama Club
- Choir
- Computing Club
- Music Instrument Lessons
- Creative Writing
- Combined Cadet Force (CCF)
- Duke of Edinburgh Award

edulinkone

<https://www.edulinkone.com/>

All clubs can be booked via
edulinkone





All Saints'
Academy
Cheltenham



'Ofsted judges All Saints' Academy to be a very inclusive school'

We continue to build on our established reputation and success for educational excellence to deliver a learning curriculum that is enriched through collaboration with other schools, colleges, universities, as well as links with business and industry so that all our students and families of our community can thrive and achieve their aspirations in higher education and their future careers.

- Leaders and directors have a passion and commitment for the community they serve
- Staff hold fast to the school's values and ethos which unite them in their drive to improve standards
- The Principal provides outstanding leadership, which has led to rapid progress being made
- There is a strong culture of respect and tolerance
- Pupils are polite and courteous



'All Saints' Academy is a real source of hope for its students and for the local community'

The vision of 'life in all its fullness' drives the academy forward in its particular service to the disadvantaged and is aspirational for both students and adults.

Students in all years talk movingly about how the academy is giving them positive life choices and how their expectations of themselves are constantly being raised.

- Inspirational and relentless leadership produces creative partnerships with a wide range of organisations. These partnerships lead to students thriving in many areas of their lives.
- The curriculum is broad and balanced, and staff are effective at challenging and supporting students of all abilities.
- Students consider their classrooms to be safe spaces where all views are respected.
- Student interest in the challenging GCSE and A-level topics is high and the staff choose stimulating learning resources.
- The term 'family' is used by many to emphasise the intention and the practices of the academy.



Tutor Groups

| Tutor Group | Tutor(s) | Email |
|-------------|----------------|--|
| 9C | Mrs Watkins | Hwatkins@asachelt.org |
| 9D | Ms Lund | Alund@asachelt.org |
| 9G | Mr Etherington | Betherington@asachelt.org |
| 9S | Mr Davies | Rdavies@asachelt.org |
| 9T | Miss Harbour | Rharbour@asachelt.org |
| 9W | Miss Harper | Gharper@asachelt.org |
| 9Y | Miss Hartigan | Rhartigan@asachelt.org |



All Saints'
Academy
Cheltenham



For more information about us please visit
our website and social media channels.

www.asachelt.org



@asachelt